



WTC MACHINERY Engineered to perform. Built to last.

WTC Machinery is a global leader in designing and building machinery and tooling for heavy equipment repair facilities.

SCRS

Overview

The SCRS Small Cylinder Repair Stand provides a stable platform for servicing hydraulic cylinders. The SCRS is a space-saving option for disassembly and nut-busting on small and medium rod eye style hydraulic cylinders. The unique frame design allows barrel storage on top of the unit, making the maximum use of available shop space.

Using the self-contained hydraulic system, the SCRS loosens and tightens piston nuts up to 20,000 lb-ft (27,100 N-m).



B2888-001 SCRS Small Cylinder Bench and B3572 Square Nut Socket (Optional)

Specifications:

Maximum Cylinder Weight:	8000 lbs (3650 kg)
Maximum Barrel Diameter:	11 1/2 in (292 mm)
Maximum Cylinder Length:	109 in (2,76m)
Maximum Rod Eye Width:	8.8 in (225 mm)
Maximum Piston Nut (Across Flats):	6.3 in (162 mm)
Maximum Torque:	20,000 lb-ft (27,100 N-m)

Electrical

Power Requirements:	2 Hp (1.5 kW)
Standard Voltages:	120/60, 220/50, 230/60 Single-Phase

B2888-001 - SCRS Small Cylinder Repair Stand Specifications

DIMENSIONS

Weight 1620 lbs (735 kg) **Length**..... 109 inches (2,76 m)
Width 32 inches (0,81 m) **Height** 52 inches (1,32 m)

HYDRAULIC

Maximum Pressure 3000 p.s.i. (207 bar)
Maximum Flow 1.0 gpm (3.8 lpm)

ELECTRICAL 2 Hp (1.5 kW) 1 Phase Electric

Standard Voltages:

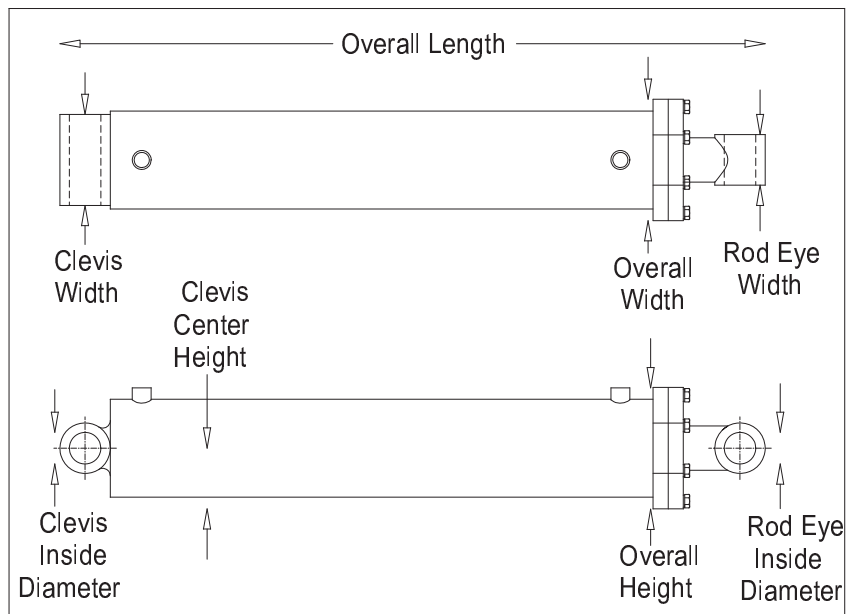
50 Hz (1500 rpm)	60 Hz (1800 rpm)
220 V / 9.5 A	115 V / 19.0 A
	230 V / 9.5 A

Other voltages available upon request

TORQUING CAPACITY 20,000 Foot-Pounds (27,100 N-m)

CAPACITY - MAXIMUM / MINIMUM CYLINDER SPECIFICATIONS

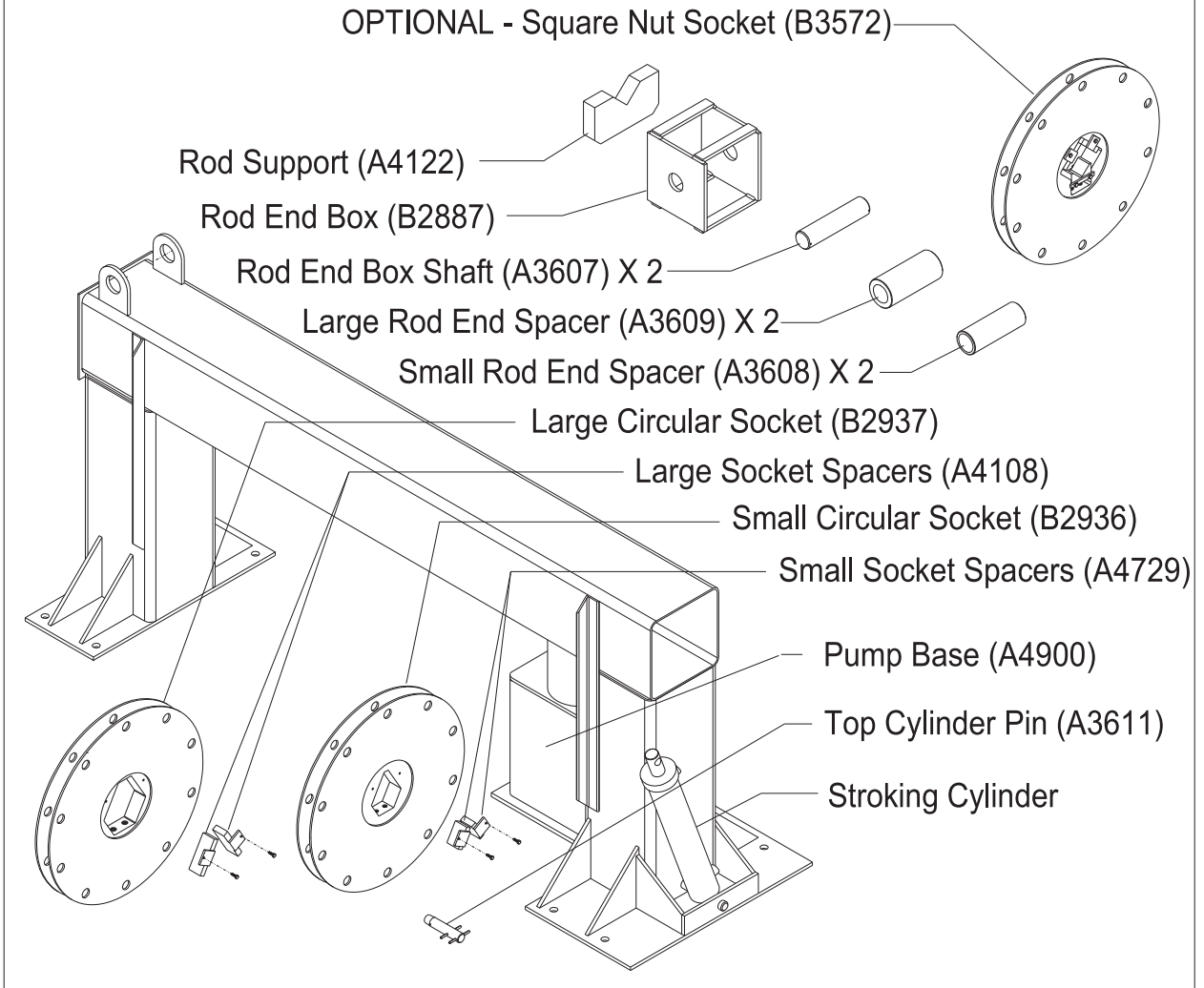
Weight < 8000 lbs (3650 kg)	Overall Length < 109 inches (2,76 m)
Overall Width .. < 11-1/2 inches (292 mm)	Overall Height < 11-1/2 inches (292 mm)
Clevis Width < 8-7/8 inches (225 mm)	Clevis Inside Dia > 2-1/4 inches (58 mm)
Rod Eye Width ... < 8-7/8 inches (225 mm)	Rod Eye Inside Dia ... > 2-1/4 inches (58 mm)
	Clevis Center Hgt < 3-1/2 inches (90 mm)



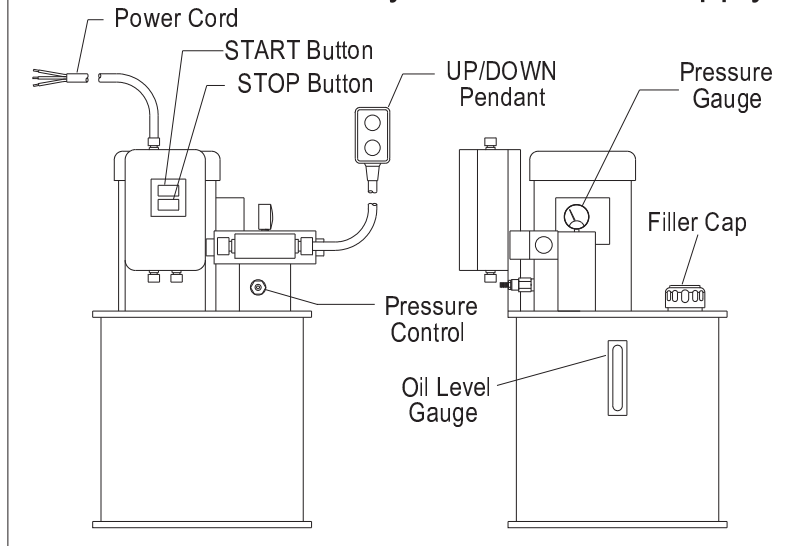
SPECIFICATIONS SUBJECT TO CHANGE WITHOUT NOTICE

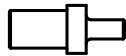
Rev B - 14.03.3 - Add Clevis CL Dim.


Small Hydraulic Cylinder Bench - Part Identification



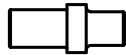
SCRS Hydraulic Power Supply




 0.25" (6,3 mm)

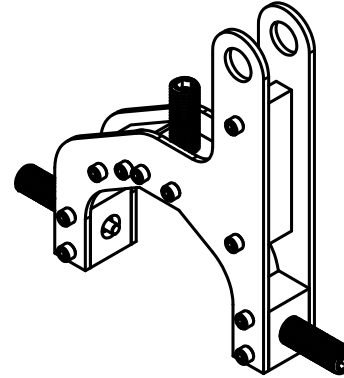
 0.31" (7,9 mm)

 0.37" (9,5 mm)

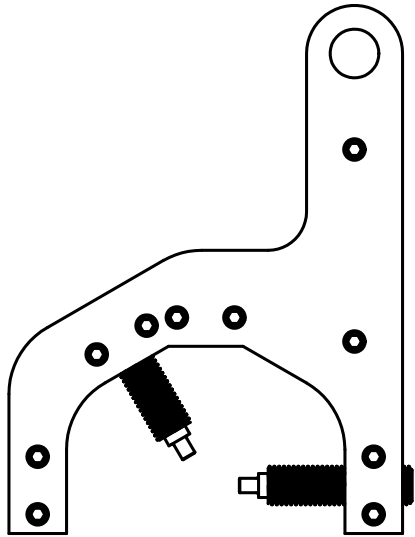
 0.43" (11,1 mm)

 0.50" (12,7 mm)

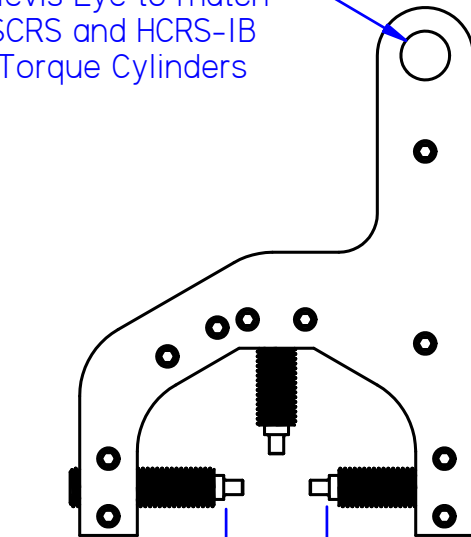
Spanner Pin Set
3 Pins per Set



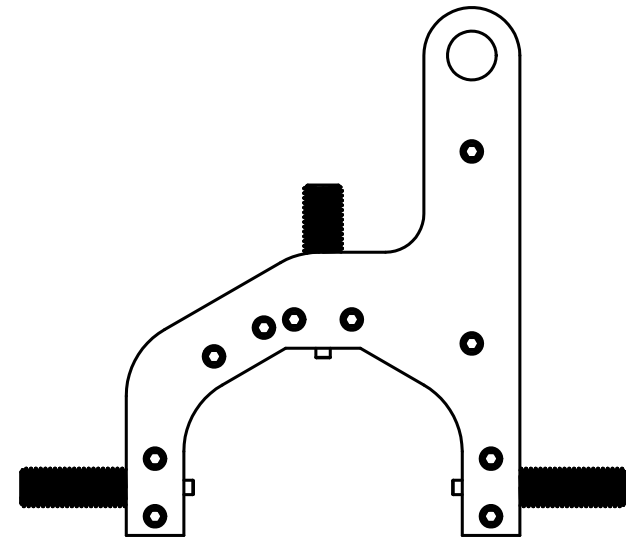
Clevis Eye to match
SCRS and HCRS-1B
Torque Cylinders



3-Hole Gland Nuts



2.62"
(67 mm)
Minimum
Diameter



7.25"
(184 mm)
Maximum
Diameter

2-Hole and 4-Hole Gland Nuts



WTC Machinery, LLC

W 1222 LINDEN ROAD
IXONIA, WISCONSIN 53036 USA

THIS DRAWING IS THE PROPERTY OF WTC MACHINERY, LLC
DO NOT USE, DISTRIBUTE OR COPY WITHOUT WRITTEN PERMISSION

TOLERANCES UNLESS OTHERWISE SPECIFIED

FABRICATED DIMENSIONS +/- 1/16
FRACTIONAL DIMENSIONS +/- 1/64
DECIMAL DIMENSIONS +/- .010
INSIDE RADII 1/32
ANGULAR DIMENSIONS +/- 1/2
SURFACE FINISH 125
BREAK ALL SHARP EDGES

DO NOT SCALE DRAWING

TITLE **Heavy Side-Spanner Tool**

NEXT ASSEMBLY

USED ON
SCRS and HCRS-1B Cylinder Benches

SHEET

DATE
14.05.22

SIZE

DRAWING NUMBER

REV

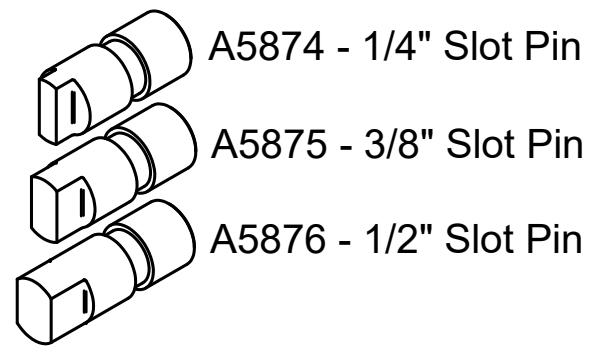
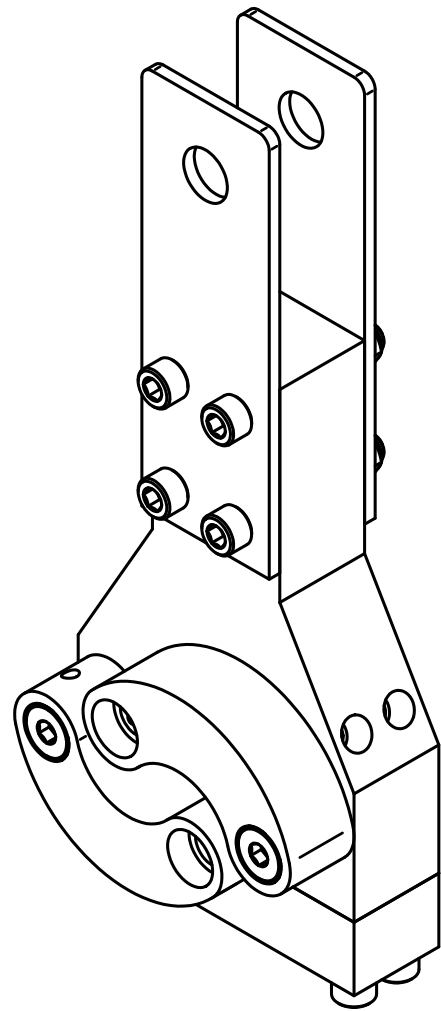
DRAWN
Solid Edge

WGT
19.8 lbs

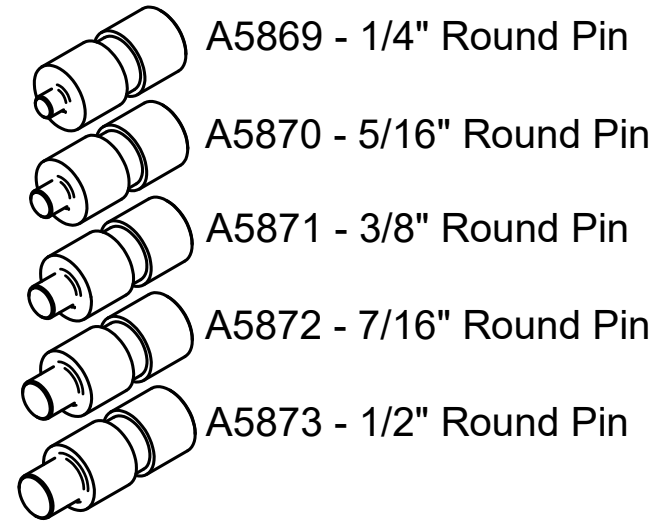
A

B3855

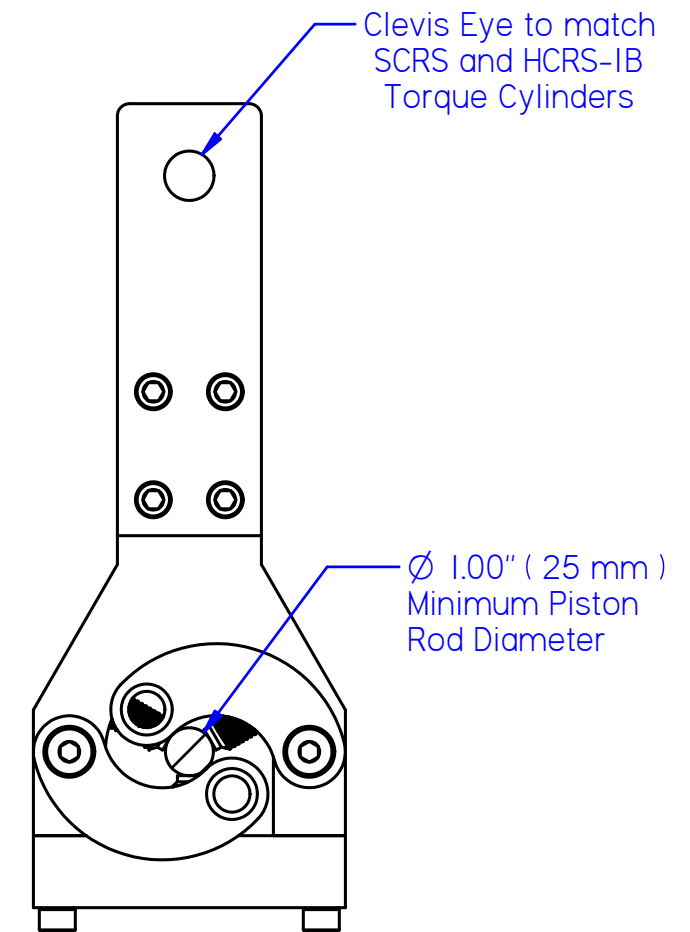
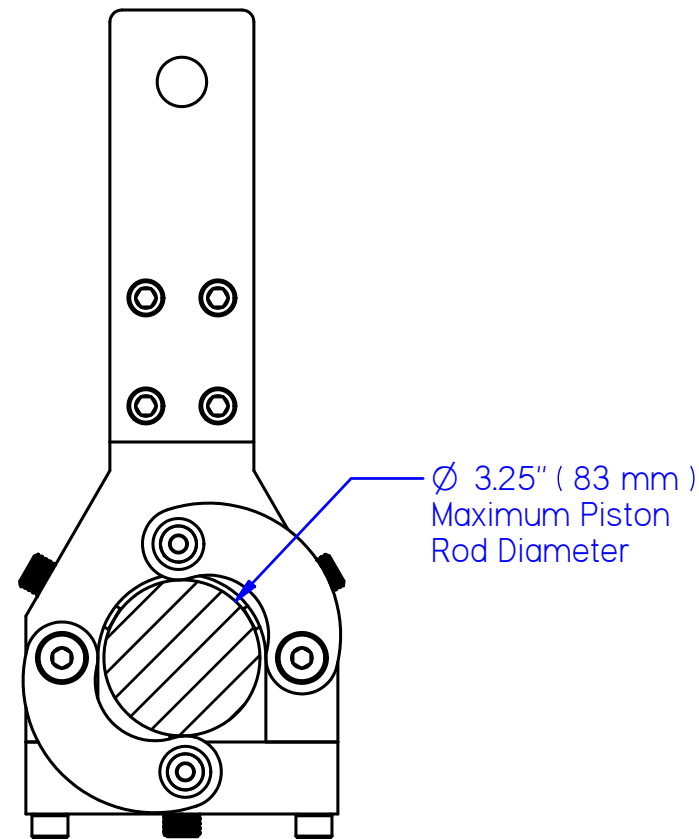
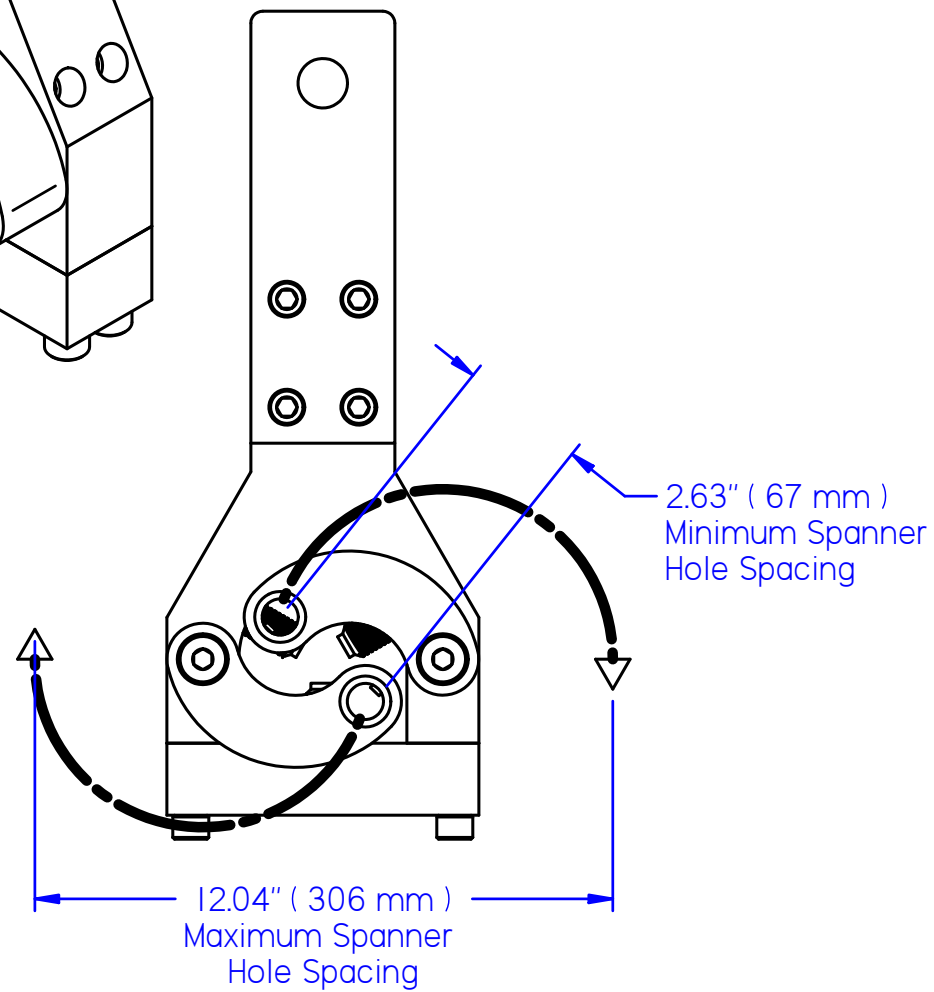
B



Slot Spanner Pins (2 of Each)



Round Spanner Pins (2 of Each)



WTC Machinery, LLC

W1222 LINDEN ROAD
IXONIA, WISCONSIN 53036 USA

TOLERANCES UNLESS OTHERWISE SPECIFIED

FABRICATED DIMENSIONS +/- 1/16
FRACTIONAL DIMENSIONS +/- 1/64
DECIMAL DIMENSIONS +/- .010
INSIDE RADII 1/32
ANGULAR DIMENSIONS +/- 1/2
SURFACE FINISH 125

THIS DRAWING IS THE PROPERTY OF WTC MACHINERY LLC
DO NOT USE, DISTRIBUTE OR COPY WITHOUT EXPRESS PERMISSION

**BREAK ALL SHARP EDGES
DO NOT SCALE DRAWING**

NEXT ASSEMBLY

SCRS / HCRS-1B Cylinder Benches

USED ON

SCRS / HCRS-1B Cylinder Benches

TITLE

Face Spanner Tool

SHEET	DATE 14.03.06	SIZE	DRAWING NUMBER	REV
DRAWN Solid Edge	WGT 35.9 lbs	B	B3840	A



W1222 LINDEN ROAD, IXONIA, WISCONSIN 53036 USA
Phone: 800-248-8405 or 262-567-3993 • Fax: 262-567-4307 www.wtcmachinery.com

MANUFACTURERS/BENEFICIARY'S WARRANTY CERTIFICATE WTC MACHINERY, LLC WARRANTY

WTC MACHINERY, LLC warrants its products to be free from defects in material and workmanship under normal use and service for a period of twelve (12) months after date of shipment. WTC MACHINERY, LLC undertakes to be responsible for any defect that may arise due to faulty raw materials, design, workmanship and defective parts and to replace them without extra cost. Freight charges are the customer's responsibility. Our warranty is not transferable.

WTC MACHINERY, LLC shall have the option of requiring the return of all parts claimed defective. Parts proved to be defective, due to defect in workmanship and/or material, shall be either repaired or replaced free of charge, F.O.B. our designated factory. All parts warranty claims are subject to inspection by WTC MACHINERY, LLC and acceptance at the factory

Our warranty does not obligate us to bear the cost of labor or transportation charges in connection with the replacement or repair of defective parts and the removal and/or remounting of the parts repaired or replaced under this warranty, unless specifically authorized in writing by WTC MACHINERY, LLC. All parts returned to the factory must be shipped freight prepaid; no collect freight will be accepted by the factory. Forms authorizing such returns for inspection must accompany all returns.

This warranty shall not apply to products not manufactured by WTC MACHINERY, LLC. Outside purchased equipment and accessories (not of WTC manufacture) are warranted only to the extent of the original equipment manufacturer's warranty and subject to their allowance to WTC MACHINERY, LLC. In this respect, our warranty obligations must conform and be limited to the warranty extended to WTC MACHINERY, LLC by its suppliers as extended to the customer.

We shall, in no event, be liable for consequential damages or contingent liability arising out of the failure of any unit or part to operate properly, or that is subject to:

- Ordinary operating wear, abuse, misuse, or overloading;
- Repairs or alterations by parties other than WTC MACHINERY, LLC;
- The use of improper fluids, contaminated fluids or improper filtering;
- The use of improper voltage hookup in the electrical connections of any equipment;
- Negligence, accident or damages due to deterioration during periods of storage by the purchaser prior to installation and operation;
- Damages occurred in shipment after leaving factory en route to customers' delivery point, as title to equipment passes to customer when loaded onboard for shipment, f.o.b. factory, and customer must place his own claim against damaged goods directly to the shipping company and not against WTC MACHINERY, LLC, its factory, or any of its personnel.
- Damages due to circumstances beyond the control of WTC MACHINERY, LLC and in connection with fulfilling any obligation under this warranty.

To the maximum extent permitted by applicable law, in no event shall WTC Machinery, LLC be liable for indirect, special, incidental or consequential damages resulting from personal injury, loss of business profits or business interruption from the use of its products, or from the inability to use its products.

This warranty is exclusive and is in lieu of all other expressed and implied warranties, including but not limited to implied warranties or merchantability and fitness for a particular purpose. WTC MACHINERY, LLC shall not be subject to any other obligations or liabilities whatsoever with respect to equipment manufactured or supplied by WTC MACHINERY, LLC, or services rendered to it.