



WTC MACHINERY Engineered to perform. Built to last.

WTC Machinery is a global leader in designing and building machinery and tooling for heavy equipment repair facilities.

RIP Ton Roller Idler Press

Overview

This high capacity press performs all operations including: disassembly, assembly and bore sizing of crawler tractor rollers and idlers as well as block and collar removal. The double-acting hydraulic cylinder allows work in both extend and retract directions.

Available tooling includes pusher bars and optional ring and pin seal installers and bore sizing disks. "J"-Hooks and lifting tongs are also available to support rollers and idlers up to 4,000 lbs (1820 kg).



Features:

- Sturdy Frame
- Double action ram cylinder
- Universal puller bars and Adjustable Bolster Plates
- Adjustable Roller support with Ball Bearing Carrier
- Waste Oil Collection Pan
- Standard 2,000 lb. capacity manual Jib Hoist (Electric powered Hoist optional)

Specifications:

Main Cylinder Force:	75/68M Ton
Main Cylinder Stroke:	26½ inches (330 mm)
Approach Speed:	55 IPM (1.4 m/min)
Return Speed:	68 IPM (1.7 m/min)
Jib Crane :	2,000 lb (910 kg) Capacity

Electrical

Main Motor:	20 Hp (14.9 kW)
Standard Voltages:	Three Phase
	208V / 60 Hz
	220V / 50 Hz
	230V / 60 Hz
	385V / 50 Hz
	415V / 50 Hz
	460V / 60 Hz

RIP Roller Idler Press Specifications

DIMENSIONS

Weight ... 4400 lbs (2000 kg)	Width (Depth) 130 inches (3,3 m)
Length 72 inches (1,8 m)	Height (without Crane)..... 67 inches (1,7 m)
	Height (with Crane) 126 inches (3,2 m)

HYDRAULIC CYLINDER

Capacity 75 tons (68 tonnes)	Speeds -
Travel 26½ inches (330 mm)	Approach Speed55 IPM (1,4 m/min)
Rod Diameter: 3½ inches (88,9 mm)	Return Speed 68 IPM (1,7 m/min)
Piston Diameter: 8 inches (203 mm)	

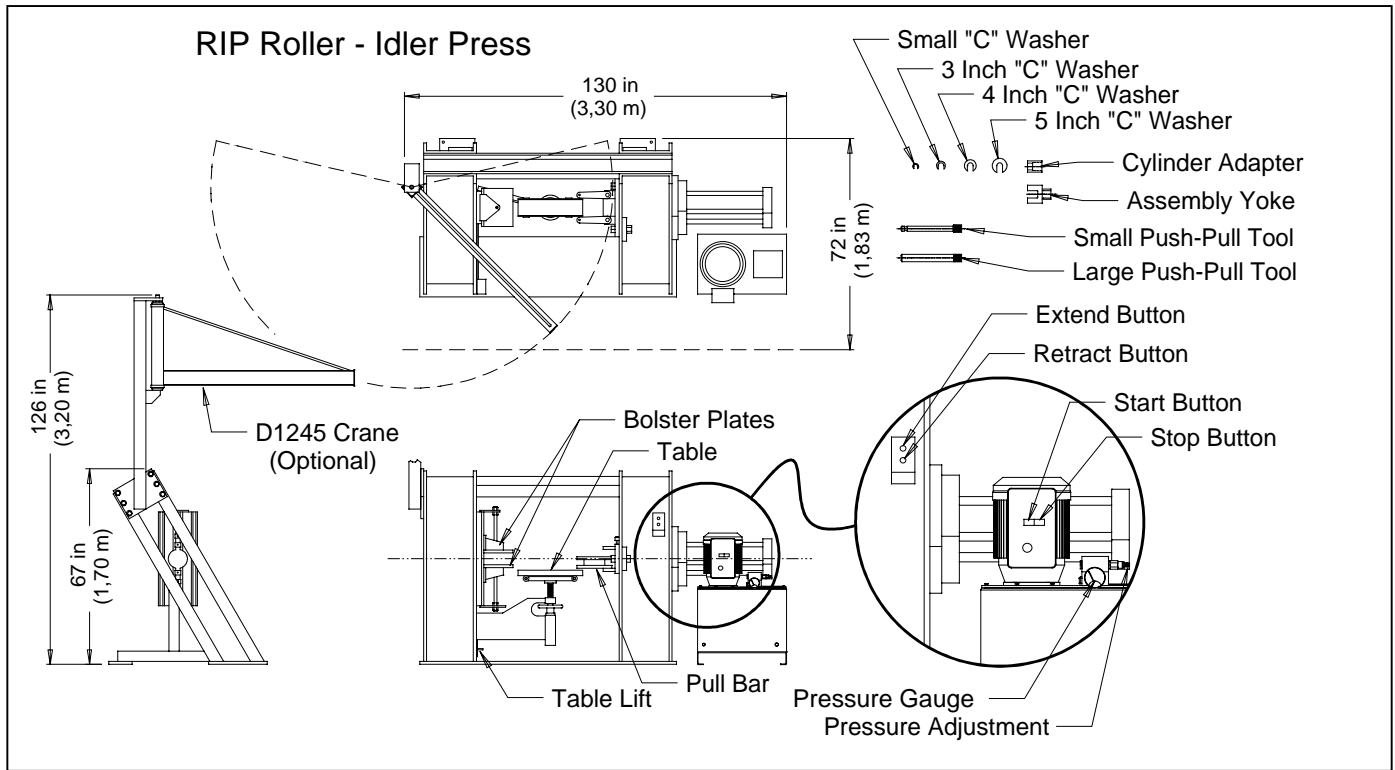
D1245 Crane (Optional)

Crane capacity of 2000 lbs (910 kg)

HYDRAULIC PUMP UNIT

Pump -	Electric Motor -
Flow12.0 gpm (45,3 lpm)	20 Hp (14.9 kW) 3 Phase electric.
	Standard Voltages:
Pressure 3000 psi (207 atm) max.	<u>50 Hz (1500 rpm)</u> <u>60 Hz (1800 rpm)</u>
	440V/29A, 460V/27A
Reservoir -	380V/30A 230V/54A
Total - 50 US gallons (190 l)	220V/56A 208V/60A
Usable - 35 US gallons (132 l)	Other voltages available
Oil Type -	
ISO 32, SUS 50 to 300 over 70° to 180° F range.	
Pressure rating to 4,000 p.s.i.	
Anti-wear additives suited to hydraulic pumps.	

SPECIFICATIONS SUBJECT TO CHANGE WITHOUT NOTICE



Control Identification

Start Button - Starts the electric motor and hydraulic pump

Stop Button - Stops the electric motor and hydraulic pump

Extend Button - extends hydraulic cylinder

Retract Button - Retracts hydraulic cylinder

Pressure Gauge - Displays the hydraulic pressure in p.s.i.

Pressure Adjustment - Controls the hydraulic pressure

Table Lift - Lifts and unlocks the Table. When unlocked, the Table can be swung out for easy part loading.



W1222 LINDEN ROAD, IXONIA, WISCONSIN 53036 USA
Phone: 800-248-8405 or 262-567-3993 • Fax: 262-567-4307 www.wtcmachinery.com

MANUFACTURERS/BENEFICIARY'S WARRANTY CERTIFICATE WTC MACHINERY, LLC WARRANTY

WTC MACHINERY, LLC warrants its products to be free from defects in material and workmanship under normal use and service for a period of twelve (12) months after date of shipment. WTC MACHINERY, LLC undertakes to be responsible for any defect that may arise due to faulty raw materials, design, workmanship and defective parts and to replace them without extra cost. Freight charges are the customer's responsibility. Our warranty is not transferable.

WTC MACHINERY, LLC shall have the option of requiring the return of all parts claimed defective. Parts proved to be defective, due to defect in workmanship and/or material, shall be either repaired or replaced free of charge, F.O.B. our designated factory. All parts warranty claims are subject to inspection by WTC MACHINERY, LLC and acceptance at the factory

Our warranty does not obligate us to bear the cost of labor or transportation charges in connection with the replacement or repair of defective parts and the removal and/or remounting of the parts repaired or replaced under this warranty, unless specifically authorized in writing by WTC MACHINERY, LLC. All parts returned to the factory must be shipped freight prepaid; no collect freight will be accepted by the factory. Forms authorizing such returns for inspection must accompany all returns.

This warranty shall not apply to products not manufactured by WTC MACHINERY, LLC. Outside purchased equipment and accessories (not of WTC manufacture) are warranted only to the extent of the original equipment manufacturer's warranty and subject to their allowance to WTC MACHINERY, LLC. In this respect, our warranty obligations must conform and be limited to the warranty extended to WTC MACHINERY, LLC by its suppliers as extended to the customer.

We shall, in no event, be liable for consequential damages or contingent liability arising out of the failure of any unit or part to operate properly, or that is subject to:

- Ordinary operating wear, abuse, misuse, or overloading;
- Repairs or alterations by parties other than WTC MACHINERY, LLC;
- The use of improper fluids, contaminated fluids or improper filtering;
- The use of improper voltage hookup in the electrical connections of any equipment;
- Negligence, accident or damages due to deterioration during periods of storage by the purchaser prior to installation and operation;
- Damages occurred in shipment after leaving factory en route to customers' delivery point, as title to equipment passes to customer when loaded onboard for shipment, f.o.b. factory, and customer must place his own claim against damaged goods directly to the shipping company and not against WTC MACHINERY, LLC, its factory, or any of its personnel.
- Damages due to circumstances beyond the control of WTC MACHINERY, LLC and in connection with fulfilling any obligation under this warranty.

To the maximum extent permitted by applicable law, in no event shall WTC Machinery, LLC be liable for indirect, special, incidental or consequential damages resulting from personal injury, loss of business profits or business interruption from the use of its products, or from the inability to use its products.

This warranty is exclusive and is in lieu of all other expressed and implied warranties, including but not limited to implied warranties or merchantability and fitness for a particular purpose. WTC MACHINERY, LLC shall not be subject to any other obligations or liabilities whatsoever with respect to equipment manufactured or supplied by WTC MACHINERY, LLC, or services rendered to it.