



SECTION 2 – FP100 Field Press Specifications

DIMENSIONS

Weight (less Hydraulic Power Supply) 510 lbs (232 kg)
Width 10 inches (0,25 m)
Height 18 inches (0,48 m)
Length..... 59 inches (1,50 m) Back Position
51 inches (1,29 m) Front Position
41 inches (1,04 m) Stowed

PRESSING CAPACITY 100 Short Tons (90,9 tonnes)

CYLINDER STROKE 16 inches (405 mm)

THROAT DIMENSIONS

Throat Width 16" (405 mm)

Throat Depth 4" (101 mm)

HYDRAULIC POWER SUPPLIES

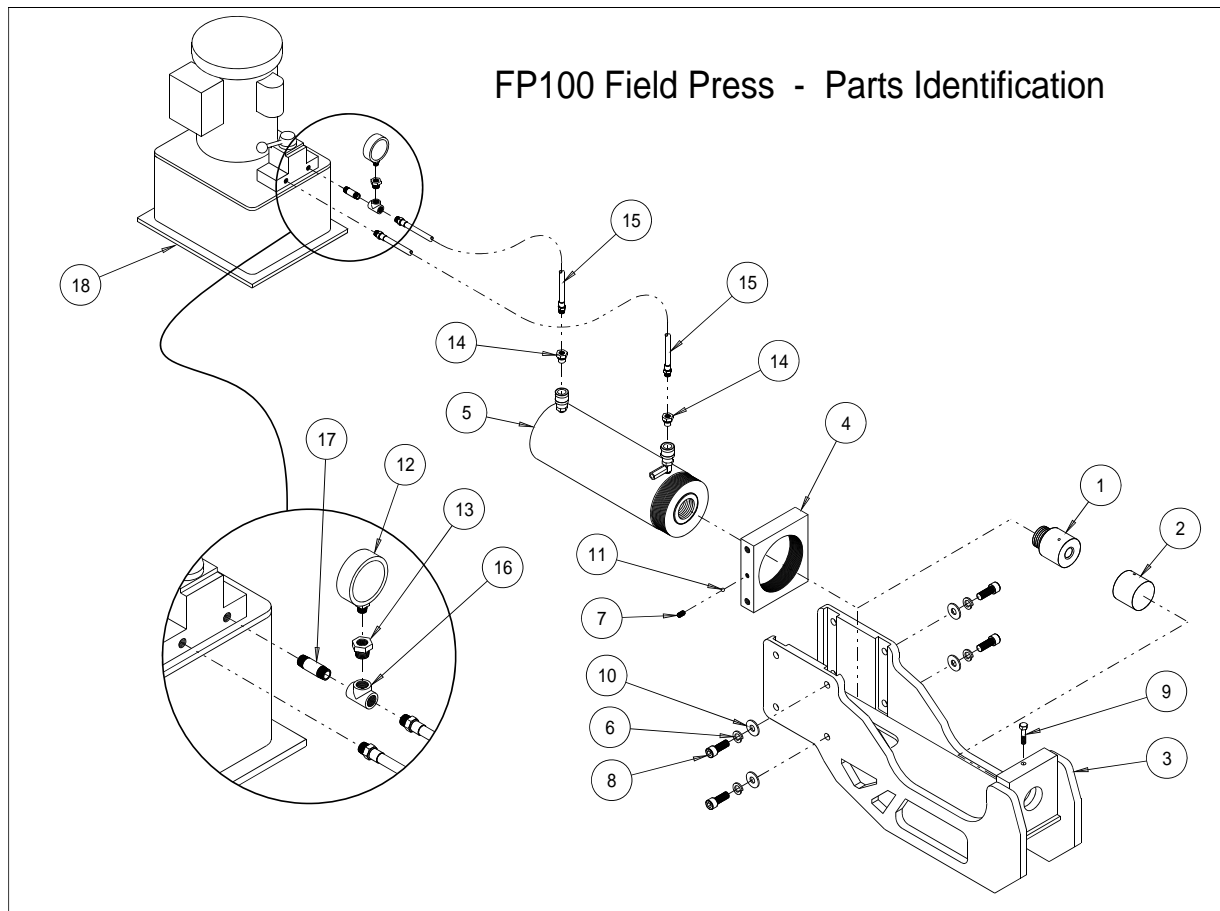
Maximum Pressure (all units)..... 10,000 p.s.i. (690 bar)

	Compressed Air Power	Electric* Power	Gasoline Power	Hand Power
FP100 Model	FP100A	FP100E	FP100G	FP100H
Reservoir Capacity	2 gal (7,6 l)	2 gal (7,6 l)	2 gal (7,6 l)	2¼ gal (8,5 l)
Flow @ 150 psi (10,3 bar)	480 in ³ /min (7,8 lpm)	560 in ³ /min (9,1 lpm)	560 in ³ /min (9,1 lpm)	145 in ³ /min (2,4 lpm)**
Flow @ 10000 psi (690 bar)	45 in ³ /min (0,7 lpm)	40 in ³ /min (0,6 lpm)	40 in ³ /min (0,6 lpm)	5 in ³ /min (0,08 lpm)**
Power	4 Hp (3,0 kW)	1½ Hp (1,1 kW)	3¾ Hp (2,8 kW)	-
Power Supply	62 SCFM @ 100 psi 1,8 m ³ /min @ 6,9 bar)	17 A @ 115 V 60Hz 9.0 A @ 220 V 50/60HZ	4-Cycle Petrol Engine	-
Width	12.8" (325 mm)	12.8" (325 mm)	12.8" (325 mm)	25.0" (635 mm)
Length	16.5" (419 mm)	16.5" (419 mm)	16.5" (419 mm)	11.2" (284 mm)
Height	12.3" (312 mm)	16.0" (406 mm)	18.4" (467 mm)	14.1" (358 mm)
Dry Weight	80 lb (36 kg)	96 lb (44 kg)	96 lb (44 kg)	71 lb (32 kg)

- Also available: 10.0 Amps, 230V 60Hz, 1 Phase (FP100-220)
10.0 Amps, 220V 50Hz, 1 Phase (FP100-220-50 and FP100-220-CE)

** - Flow based on 20 strokes per minute

SPECIFICATIONS SUBJECT TO CHANGE WITHOUT NOTICE



FP100 Models –

- FP100 – FP100 with Cylinder, less Hydraulic Parts (Pump, Hoses and Fittings)
– Includes items 1 to 11
- FP100H – FP100 with Hand Pump
– Includes items 1 to 17 and Hand Pump (item 18)
- FP100E – FP100 with 115 V Electric Powered Pump
– Includes items 1 to 17 and 115 Volt 60 Hertz Electric Powered Pump (item 18)
- FP100-220 – FP100 with 220V 60Hz Electric Powered Pump (Inside North America)
– Includes items 1 to 17 and 220 Volt 60 Hertz Electric Powered Pump (item 18)
- FP100-220-50 – FP100 with 220V 50Hz Powered Electric Pump (Outside North America)
– Includes items 1 to 17 and 220 Volt 50 Hertz Electric Powered Pump (item 18)
- FP100-220-CE – FP100 with CE-Certified 220V 50Hz Powered Electric Pump (European Union)
– Includes items 1 to 17 and 220 Volt 50 Hertz Electric Powered Pump (item 18)
- FP100A – FP100 with Compressed Air Powered Pump
– Includes items 1 to 17 and Compressed Air Powered Pump (item 18)
- FP100G – FP100 with Gasoline (Petrol) Powered Pump
– Includes items 1 to 17 and Gasoline Powered Pump (item 18)

FP100 Part Listing – Item Numbers Refer to Parts Identification Drawing (page 3)

Item No.	Part Number	Description	No Pump		Hand Pump		Electric Pump - 120 V 60 Hz		Electric Pump - 220 V 50 Hz		Electric Pump - 220 V 60 Hz	
			FP100	FP100H	FP100E	FP100-220-50	FP100-220-CE	FP100-220	FP100A	FP100G		
1	B2866	Cylinder-Side Cam-Lock Adapter	1	1	1	1	1	1	1	1	1	1
2	B2867	Backing-Side Cam-Lock Adapter	1	4	4	4	4	4	4	4	4	4
3	B3776	Frame Weldment	1	1	1	1	1	1	1	1	1	1
4	B3781	Cylinder Adapter	1	2	2	2	2	2	2	2	2	2
5	34-2444	Hydraulic Cylinder	1	1	1	1	1	1	1	1	1	1
6	36-0225	3/4" Lock Washer	4	4	4	4	4	4	4	4	4	4
7	36-0228	1/2"-13 X 1/2" Set Screw	1	1	1	1	1	1	1	1	1	1
8	36-0301	3/4"-10 X 2" SHCS	4	4	4	4	4	4	4	4	4	4
9	36-0302	1/2"-13 X 2" HHMS	1	1	1	1	1	1	1	1	1	1
10	529-1149	3/4" Flat Washer	4	4	4	4	4	4	4	4	4	4
11	419102	Nylon Pellet	1	1	1	1	1	1	1	1	1	1

12	10492	Pressure Gauge	-	1	1	1	1	1	1	1	1	1
13	34-1210	Hydraulic Fitting	-	1	1	1	1	1	1	1	1	1
14	34-2003	Hydraulic Coupling	-	2	2	2	2	2	2	2	2	2
15	34-2004	Hydraulic Hose	-	2	2	2	2	2	2	2	2	2
16	34-2006	Tee Fitting	-	1	1	1	1	1	1	1	1	1
17	34-2007	Pipe Nipple	-	1	1	1	1	1	1	1	1	1

18	34-2012	Pump Base - Hand Pump	-	1	-	-	-	-	-	-	-	-
	34-2214	Pump Base - 120 V 60 Hz	-	-	1	-	-	-	-	-	-	-
	34-2008-220-60	Pump Base - 220 V 60 Hz	-	-	-	-	-	1	-	-	-	-
	34-2074	Pump Base - 220 V 50 Hz CE	-	-	-	-	1	-	-	-	-	-
	34-2085	Pump Base - 220 V 50 Hz	-	-	-	1	-	-	-	-	-	-
	34-2174MPP	Pump Base - Air Powered	-	-	-	-	-	-	-	1	-	-
	34-2192-MPP	Pump Base - Gasoline Powered	-	-	-	-	-	-	-	-	-	1