



MPP250 Master Pin Pusher Specifications

DIMENSIONS

Weight (less Hydraulic Power Supply) 1250 lbs (568 kg)
Width 19 inches (0,48 m)

Length..... 80 inches (2,03 m)
Height 27 inches (0,69 m)

PRESSING CAPACITY **250 Short Tons (227 tonnes)**

CYLINDER STROKE **18 inches (457 mm)**

THROAT DIMENSIONS

Throat Width 42" (1066 mm)

Throat Depth15" (381 mm)

HYDRAULIC POWER SUPPLIES

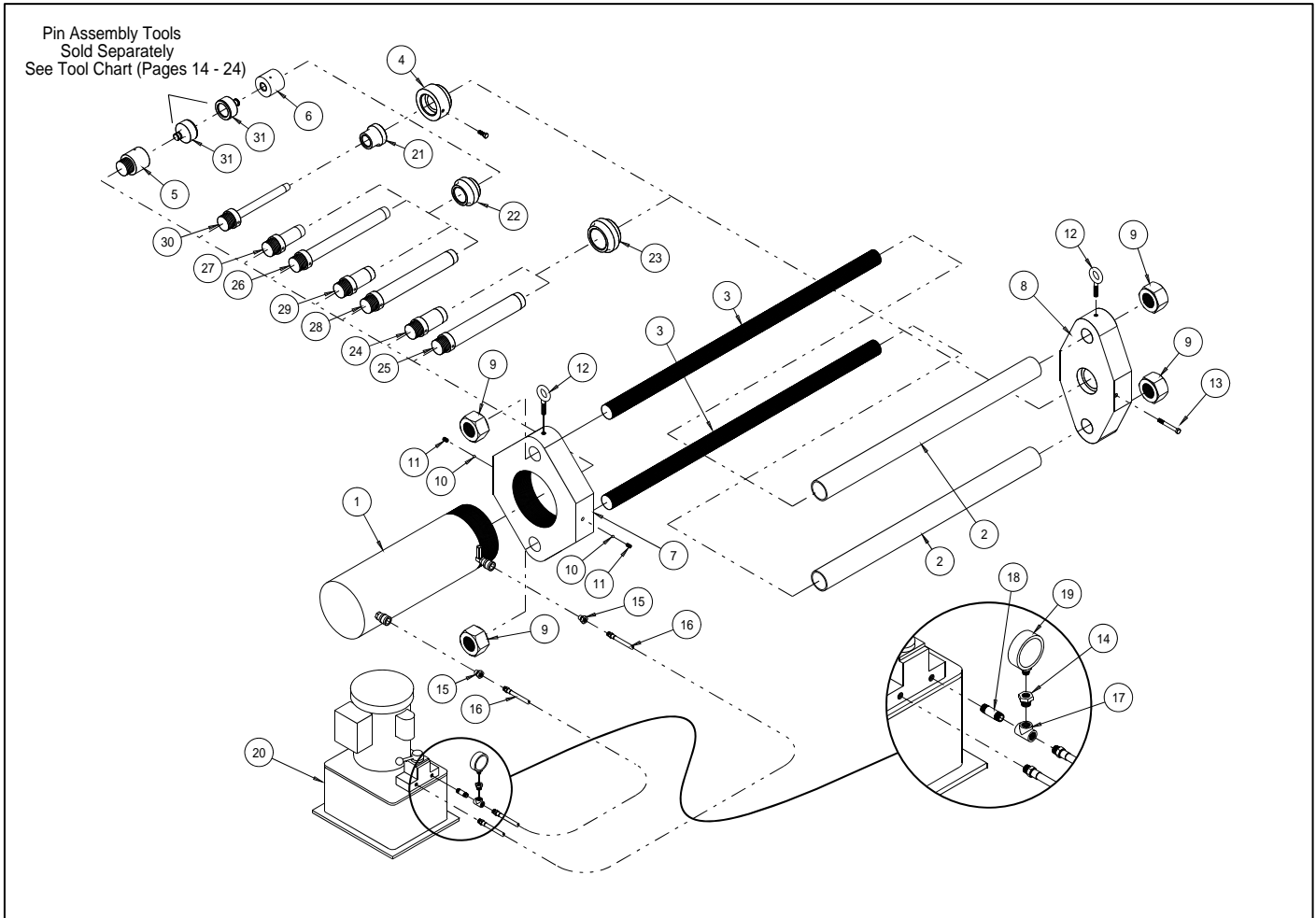
Maximum Pressure (all units)..... 10,000 p.s.i. (690 bar)

	Compressed Air Power	Electric* Power	Gasoline Power	Hand Power
MPP150 Model	MPP250-A	MPP250-E	MPP250-G	MPP250-H
Reservoir Capacity	5 gal (18,9 l)	5 gal (18,9 l)	5 gal (18,9 l)	2¼ gal (8,5 l)
Flow @ 150 psi (10,3 bar)	480 in ³ /min (7,8 lpm)	560 in ³ /min (9,1 lpm)	560 in ³ /min (9,1 lpm)	145 in ³ /min (2,4 lpm)**
Flow @ 10000 psi (690 bar)	45 in ³ /min (0,7 lpm)	40 in ³ /min (0,6 lpm)	40 in ³ /min (0,6 lpm)	5 in ³ /min (0,08 lpm)**
Power	4 Hp (3,0 kW)	1½ Hp (1,1 kW)	3¾ Hp (2,8 kW)	-
Power Supply	62 SCFM @ 100 psi 1,8 m ³ /min @ 6,9 bar)	17 A @ 115 V 60Hz 9.0 A @ 220 V 50/60HZ	4-Cycle Petrol Engine	-
Width	12.8" (325 mm)	12.8" (325 mm)	12.8" (325 mm)	25.0" (635 mm)
Length	16.5" (419 mm)	16.5" (419 mm)	16.5" (419 mm)	11.2" (284 mm)
Height	12.3" (312 mm)	16.0" (406 mm)	18.4" (467 mm)	14.1" (358 mm)
Dry Weight	84 lb (38 kg)	100 lb (45 kg)	100 lb (45 kg)	71 lb (32 kg)

- - Also available: 9.0 Amps, 230V 60Hz, 1 Phase (MPP250-220DOM)
9.0 Amps, 220V 50Hz, 1 Phase (MPP250-220-50 and MPP250-220CE)

** - Flow based on 20 strokes per minute

SPECIFICATIONS SUBJECT TO CHANGE WITHOUT NOTICE



MPP250 Parts – see page 4 for Parts Listing

MPP250 Models –

- MPP250 – MPP250 less Hydraulics
– Includes items 1 to 13 (page 4)
- MPP250-H – MPP250 with Hand Powered Pump
– Includes items 1 to 19 and Hand Pump (item 20)
- MPP250-A – MPP250 with Compressed Air Powered Pump
– Includes items 1 to 19 and Compressed Air Powered Pump (item 20)
- MPP250-E – MPP250 with 115 V Electric Powered Pump
– Includes items 1 to 19 and 115 Volt 60 Hertz Electric Powered Pump (item 20)
- MPP250-220 – MPP250 with 220V 50Hz Electric Powered Pump (Outside North America)
– Includes items 1 to 19 and 220 Volt 50 Hertz Electric Powered Pump (item 20)
- MPP250-220DOM – MPP250 with 220V 60Hz Electric Powered Pump (Inside North America)
– Includes items 1 to 19 and 220 Volt 60 Hertz Electric Powered Pump (item 20)
- MPP250-G – MPP250 with Gasoline Powered Pump
– Includes items 1 to 19 and Gasoline Powered Pump (item 20)

Rev C – 10.07.14 – Add Gasoline Pump



MPP250 Part Listing – Item Numbers Refer to Parts Identification Drawing (page 3)

Item	Part Number	Description	Model							
			No Pump MPP250	Hand Pump MPP250-H	Electric Pump - 120 V 60 Hz MPP250-E	Electric Pump - 220 V 50 Hz		Electric Pump - 220 V 60 Hz MPP250-220DOM	Air Pump MPP250-A	Gasoline Pump MPP250-G
1	A4153	Hydraulic Cylinder	1	1	1	1	1	1	1	1
2	A4158	Connecting Rod Spacer	2	2	2	2	2	2	2	2
3	A4159	Connecting Rod	2	2	2	2	2	2	2	2
4	A4160	Bushing Adapter	1	1	1	1	1	1	1	1
5	B2866	Cylinder-Side Cam Lock Adapter	1	1	1	1	1	1	1	1
6	B2867	Backing-Side Cam Lock Adapter	1	1	1	1	1	1	1	1
7	B3633	MPP250 Cylinder Yoke	1	1	1	1	1	1	1	1
8	B3634	MPP250 Backing Bar	1	1	1	1	1	1	1	1
9	36-0538	2-1/2"-8 Tie Rod Nut	4	4	4	4	4	4	4	4
10	419102	Nylon Pellet	2	2	2	2	2	2	2	2
11	529-112	1/2"-13 X 1/2" Set Screw	2	2	2	2	2	2	2	2
12	529-684	5/8"-11 Eyebolt	2	2	2	2	2	2	2	2
13	529-941	1/2"-13 X 4" HHMS	1	1	1	1	1	1	1	1
14	34-1210	Hydraulic Fitting	-	1	1	1	1	1	1	1
15	34-2003	Hydraulic Coupling	-	2	2	2	2	2	2	2
16	34-2004	Hydraulic Hose	-	2	2	2	2	2	2	2
17	34-2006	Tee Fitting	-	1	1	1	1	1	1	1
18	34-2007	Pipe Nipple	-	1	1	1	1	1	1	1
19	9051	10,000 PSI Pressure Gauge	-	1	1	1	1	1	1	1
20	34-2012	Pump Base - Hand Pump	-	1	-	-	-	-	-	-
	34-2215	Pump Base - 120 V 60 Hz	-	-	1	-	-	-	-	-
	34-2002-220-60	Pump Base - 220 V 60 Hz	-	-	-	-	-	1	-	-
	34-2074	Pump Base - 220 V 50 Hz CE	-	-	-	-	1	-	-	-
	34-2163	Pump Base - 220 V 50 Hz	-	-	-	1	-	-	-	-
	34-2173MPP	Pump Base - Air Powered	-	-	-	-	-	-	1	-
34-2193-MPP	Pump Base – Gasoline Powered	-	-	-	-	-	-	-	1	
21	A3540	1.875" Backing Bushing	Optional Tooling Sold Separately							
22	A3541	2.625" Backing Bushing								
23	A4157	3.500 Backing Bushing								
24	B3605	Short 2.677" Pin Tool								
25	B3606	Long 2.677" Pin Tool								
26	B3607	Long 2.000" Pin Tool								
27	B3608	Short 2.000" Pin Tool								
28	B3631	Long 2.375" Pin Tool								
29	B3632	Short 2.375" Pin Tool								
30	B3635	1.250" Pin Tool								
31	See Tool Chart	Pin Assembly Tool – 2 Required								

Rev C – 10.07.14 – Add Gasoline Pump